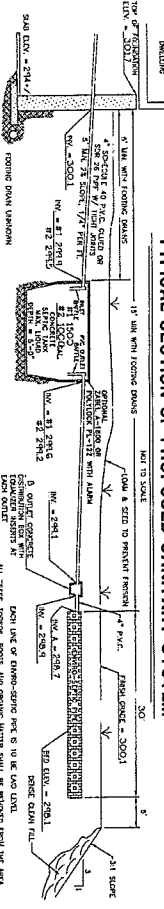
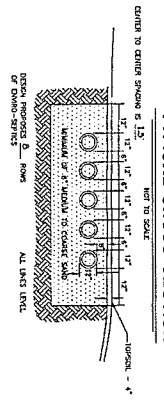


TYPICAL SECTION OF PROPOSED SANITARY SYSTEM



- 1. HOLE AND GROUT TO SPONGE SAND AND TO BE GRADED WITH A NON-SHINK 2. ALL HOLE EXCAVATIONS AND GROUT ARE FROM 12" - 14" DIA. 3. HOLE TO BE GRADED TO 12" DIA. 4. GROUT TO BE 1/2" SAND. 5. SPONGE SAND TO BE 2" DIA. 6. SPONGE SAND TO BE 2" DIA. 7. SPONGE SAND TO BE 2" DIA. 8. SPONGE SAND TO BE 2" DIA. 9. SPONGE SAND TO BE 2" DIA. 10. SPONGE SAND TO BE 2" DIA.

TYPICAL CROSS SECTION

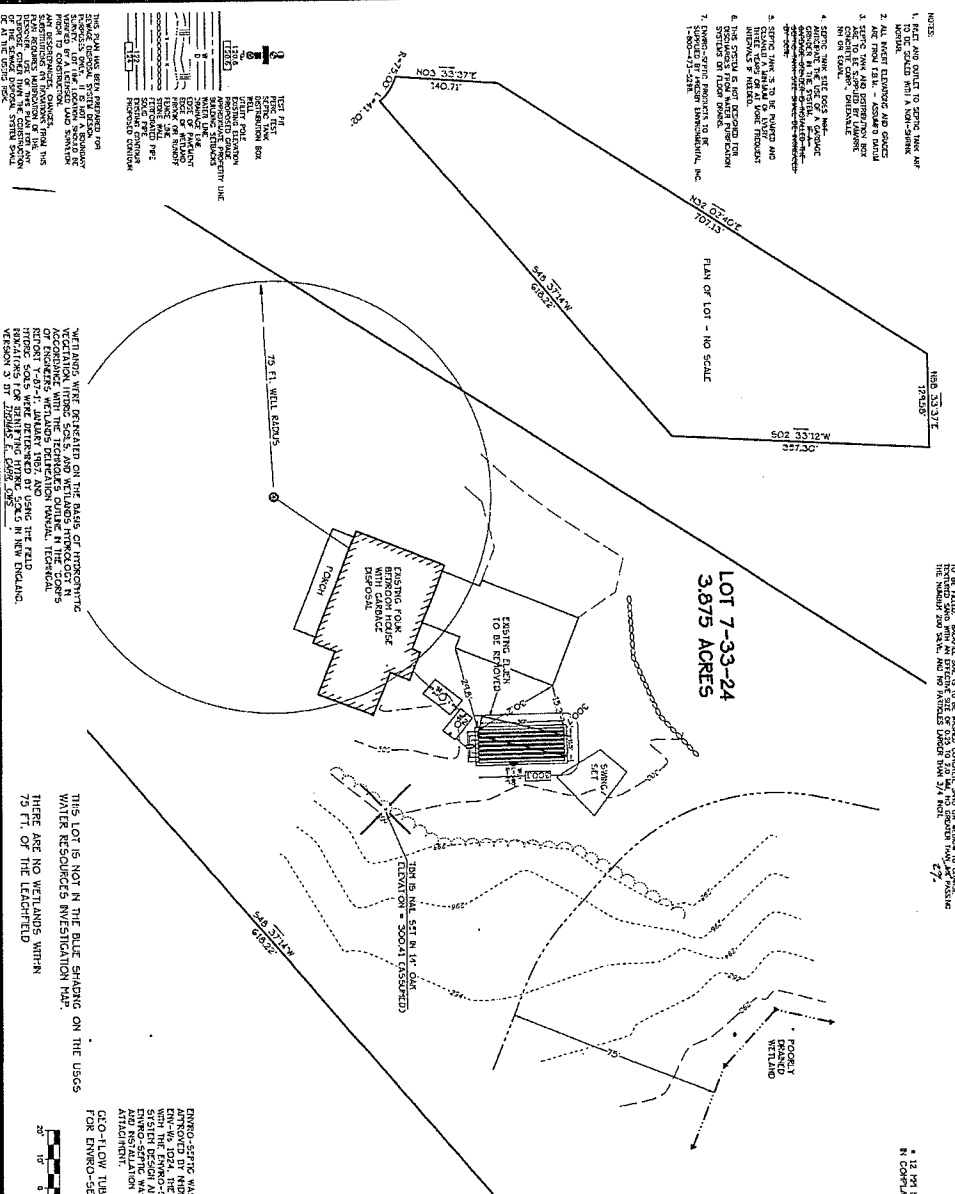


- 1. 12" DIA. TEST PIT DEPTH MUST BE USED IN COMPLIANCE WITH AMHERST REGS.

TEST PIT DATA

DEPTH	DESCRIPTION
0' - 1'	TOP SOIL
1' - 2'	TOP SOIL
2' - 3'	TOP SOIL
3' - 4'	TOP SOIL
4' - 5'	TOP SOIL
5' - 6'	TOP SOIL
6' - 7'	TOP SOIL
7' - 8'	TOP SOIL
8' - 9'	TOP SOIL
9' - 10'	TOP SOIL
10' - 11'	TOP SOIL
11' - 12'	TOP SOIL
12' - 13'	TOP SOIL
13' - 14'	TOP SOIL
14' - 15'	TOP SOIL
15' - 16'	TOP SOIL
16' - 17'	TOP SOIL
17' - 18'	TOP SOIL
18' - 19'	TOP SOIL
19' - 20'	TOP SOIL
20' - 21'	TOP SOIL
21' - 22'	TOP SOIL
22' - 23'	TOP SOIL
23' - 24'	TOP SOIL
24' - 25'	TOP SOIL
25' - 26'	TOP SOIL
26' - 27'	TOP SOIL
27' - 28'	TOP SOIL
28' - 29'	TOP SOIL
29' - 30'	TOP SOIL
30' - 31'	TOP SOIL
31' - 32'	TOP SOIL
32' - 33'	TOP SOIL
33' - 34'	TOP SOIL
34' - 35'	TOP SOIL
35' - 36'	TOP SOIL
36' - 37'	TOP SOIL
37' - 38'	TOP SOIL
38' - 39'	TOP SOIL
39' - 40'	TOP SOIL
40' - 41'	TOP SOIL
41' - 42'	TOP SOIL
42' - 43'	TOP SOIL
43' - 44'	TOP SOIL
44' - 45'	TOP SOIL
45' - 46'	TOP SOIL
46' - 47'	TOP SOIL
47' - 48'	TOP SOIL
48' - 49'	TOP SOIL
49' - 50'	TOP SOIL
50' - 51'	TOP SOIL
51' - 52'	TOP SOIL
52' - 53'	TOP SOIL
53' - 54'	TOP SOIL
54' - 55'	TOP SOIL
55' - 56'	TOP SOIL
56' - 57'	TOP SOIL
57' - 58'	TOP SOIL
58' - 59'	TOP SOIL
59' - 60'	TOP SOIL
60' - 61'	TOP SOIL
61' - 62'	TOP SOIL
62' - 63'	TOP SOIL
63' - 64'	TOP SOIL
64' - 65'	TOP SOIL
65' - 66'	TOP SOIL
66' - 67'	TOP SOIL
67' - 68'	TOP SOIL
68' - 69'	TOP SOIL
69' - 70'	TOP SOIL
70' - 71'	TOP SOIL
71' - 72'	TOP SOIL
72' - 73'	TOP SOIL
73' - 74'	TOP SOIL
74' - 75'	TOP SOIL
75' - 76'	TOP SOIL
76' - 77'	TOP SOIL
77' - 78'	TOP SOIL
78' - 79'	TOP SOIL
79' - 80'	TOP SOIL
80' - 81'	TOP SOIL
81' - 82'	TOP SOIL
82' - 83'	TOP SOIL
83' - 84'	TOP SOIL
84' - 85'	TOP SOIL
85' - 86'	TOP SOIL
86' - 87'	TOP SOIL
87' - 88'	TOP SOIL
88' - 89'	TOP SOIL
89' - 90'	TOP SOIL
90' - 91'	TOP SOIL
91' - 92'	TOP SOIL
92' - 93'	TOP SOIL
93' - 94'	TOP SOIL
94' - 95'	TOP SOIL
95' - 96'	TOP SOIL
96' - 97'	TOP SOIL
97' - 98'	TOP SOIL
98' - 99'	TOP SOIL
99' - 100'	TOP SOIL

LOT 7-33-24
3.875 ACRES

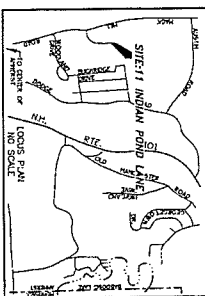


THE PLAN HAS BEEN PREPARED BY ME AND I AM A LICENSED PROFESSIONAL ENGINEER IN THE STATE OF NEW HAMPSHIRE. I HAVE CONDUCTED A VISUAL INSPECTION OF THE SITE AND HAVE FOUND IT TO BE SUITABLE FOR THE PROPOSED DISPOSAL SYSTEM. I HAVE ALSO CONDUCTED A VISUAL INSPECTION OF THE SURROUNDING AREA AND HAVE FOUND IT TO BE SUITABLE FOR THE PROPOSED DISPOSAL SYSTEM.

WETLANDS WERE IDENTIFIED ON THE BASIS OF AIRPHOTOGRAPHY AND VISUAL INSPECTION. WETLANDS WERE IDENTIFIED BY REFERENCE TO THE AERIAL PHOTOGRAPHS AND VISUAL INSPECTION OF THE SITE. THE WETLANDS WERE IDENTIFIED BY REFERENCE TO THE AERIAL PHOTOGRAPHS AND VISUAL INSPECTION OF THE SITE.

THIS LOT IS NOT IN THE BLUE SHADING ON THE USGS WATER RESOURCES INVESTIGATION MAP. THERE ARE NO WETLANDS WITHIN 75 FT. OF THE LEACHFIELD.

DESIGN, CONSTRUCTION, AND MAINTENANCE OF THE SANITARY SYSTEM. THE SYSTEM IS DESIGNED IN ACCORDANCE WITH THE 1996 SANITARY ENGINEERING HANDBOOK, 6TH EDITION, AND THE 1996 SANITARY ENGINEERING HANDBOOK, 6TH EDITION, AND THE 1996 SANITARY ENGINEERING HANDBOOK, 6TH EDITION.



LOT 7-33-24
AMHERST, NEW HAMPSHIRE

DATE: 3/24/2011
BY: ELIZABETH AND DONALD WALDRON
FOR: AMHERST STREET, AMHERST, NH, 03021

Meridian Land Services, Inc.
310 Old Main Road, Suite 2, Amherst, NH 03021
Tel: 603-431-1141
Fax: 603-431-1141
Project: 86282.00